

Mount James Wind Farm

Iberdrola Australia is proposing a wind farm at Mount James in North Queensland, with an installed capacity of up to 1,000 megawatts (MW) of electricity. The wind farm will comprise up to 166 wind turbines with a maximum tip height of 300 metres. Once operational, it will be one of Australia's largest onshore wind farms.

Environmental studies have been completed on the project site, allowing the wind farm to be designed to minimise impacts on environmentally, culturally and heritage sensitive areas. Development Approval was granted by the Queensland State Planner in July 2022 and the Environment Protection and Biodiversity Conservation Act (EPBC) Assessment is currently underway.

Iberdrola Australia

Iberdrola Australia has 20 years of experience in the renewable energy industry, operating 1.5 gigawatts (GW) of renewable projects. Our vision is to influence and accelerate the take-up of clean energy in Australia through increasing investment to support Australia's energy transition. We develop, construct, own and operate our projects responsibly with a focus on community and sustainability outcomes and we are committed to being the lead green energy supplier for Australian businesses.

Iberdrola Australia is part of the Iberdrola Group, operating globally and recognised as sustainability leaders.

Project overview

The Mount James Wind Farm project is located in North Queensland's Porcupine region, approximately 80 kilometres (km) north of Hughenden, along the western edge of the Great Dividing Range. It is in the North Queensland Renewable Energy Zone, the largest renewable energy zone in Australia.

The recent Queensland government announcement of the Copperstring 2032 project to construct a 1,100 km high-voltage electricity transmission line from Townsville to Mount Isa combined with North Queensland's abundant wind resources makes it ideal for renewable energy generation. This region will play an important role in meeting the Queensland government's economic decarbonisation target of 80% renewable energy by 2035 and Iberdrola Australia are proud to be involved.



Project benefits



Over **\$1.5bn** local investment



300+ construction jobs and **6** long-term operations role



Installed capacity of up to **1 GW** Producing **~3,000 GWh** of renewable energy annually

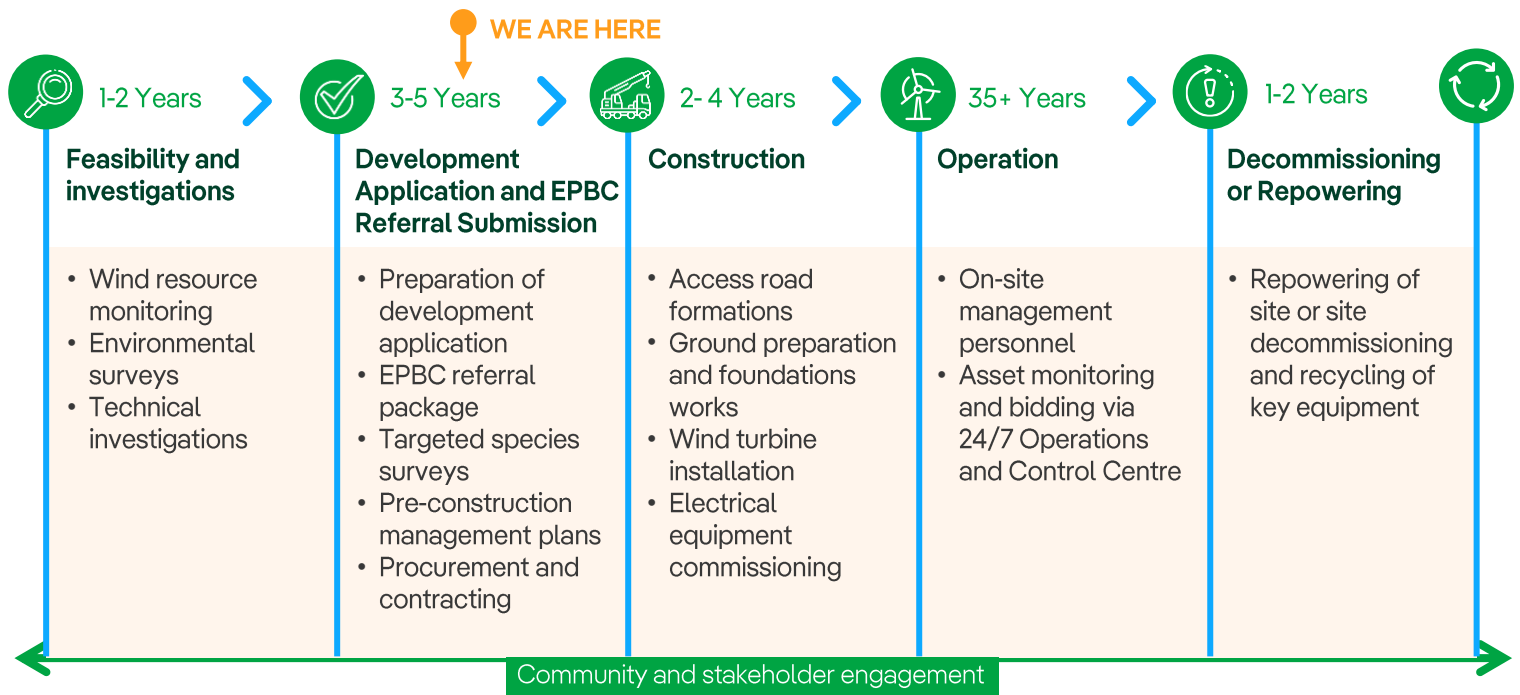


Powering up to **430,000** homes



Establishment of a **Community Benefit Fund**

Project timeline



Community benefits

Iberdrola Australia is committed to working with local communities and stakeholders to ensure our projects have positive long-lasting impacts. We seek to act as a good neighbour, establish a long-term relationship, and become an integral member of the local communities within which we operate. We look for opportunities to share the benefits of our projects with the local community.



The Mount James Wind Farm project will deliver the following local benefits:

- ✓ Significant economic investment across North Queensland's Porcupine region.
- ✓ Use of local products and services such as retail, transport, restaurants and accommodation.
- ✓ Employment opportunities during development, construction and once the Mount James Wind Farm is operating.
- ✓ The sponsorship of local community projects and supporting local group initiatives.
- ✓ Establishment of a community benefit fund administered by locals for the life of the wind farm.
- ✓ Providing an alternative income to support our farmers and landowner.

Find out more

Visit our website:
www.iberdrola.com.au

Follow us on LinkedIn:
www.linkedin.com/company/iberdrola-au/

Call us on **1800 917 372** (24 hours, free within Australia)

Comments and Feedback

We would like to hear from you! Please contact us with your questions, comments and feedback.

If you are a contractor or supplier who is interested in being involved in this project, please email us to be added to our supplier list.

Email us: mountjameswindfarm@iberdrola.com.au